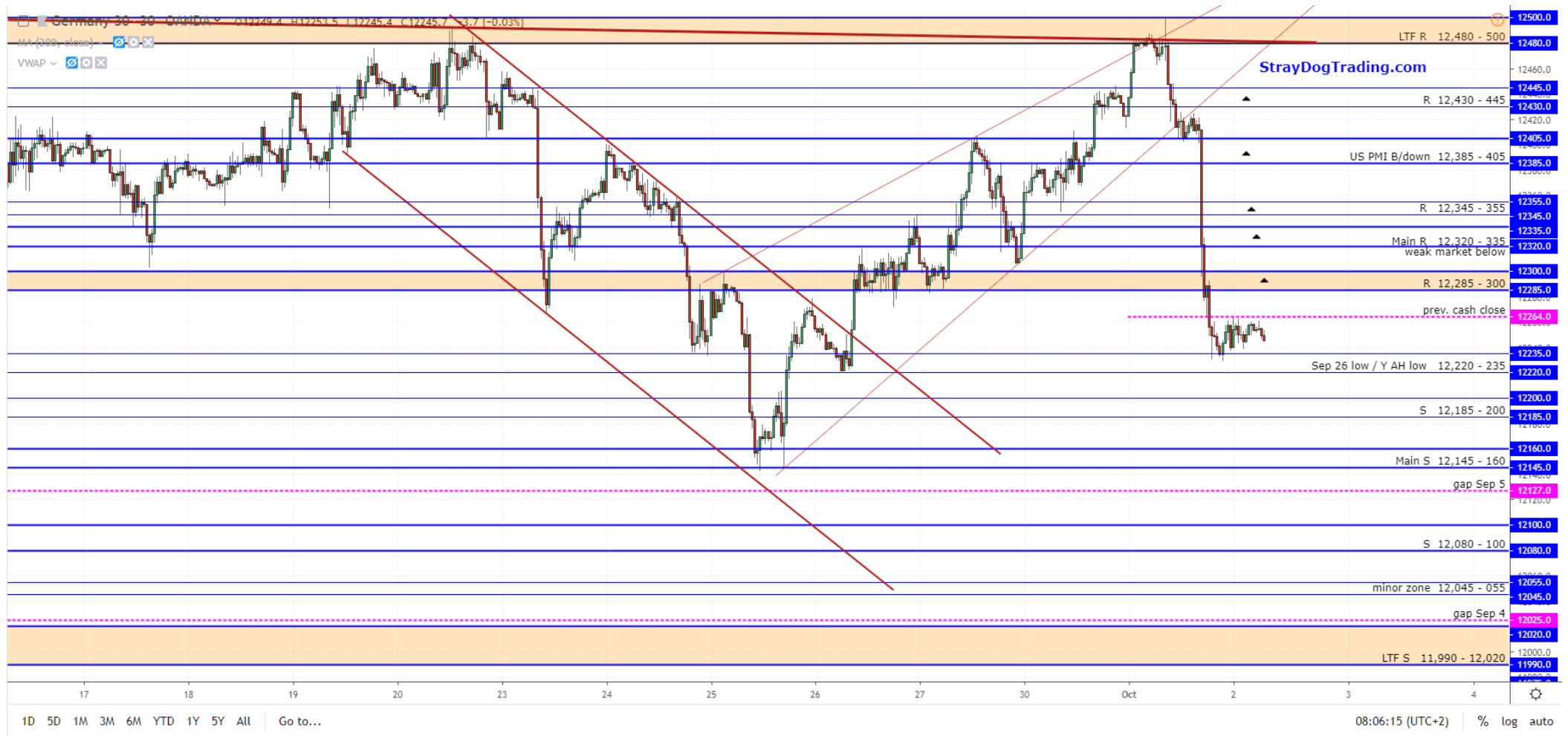


DAX 30 min chart with S/R zones – Wednesday, October 2, 2019

two additional charts below



SPX CFD 240 min chart – Wednesday, October 2, 2019

levels on SPX, hugging the 2942 level

S&P 500 Index · 240 · OANDA ▾ O2941.4 H2943.4 L2939.8 C2940.2 -1.2 (-0.04%)
MA (200, close) ▾ [] [] [] []
MA (50, close) ▾ [] [] [] []



1D 5D 1M 3M 6M YTD 1Y 5Y All | Go to...

08:09:32 (UTC+2) | % log auto

DAX Cash Index Daily chart – Wednesday, October 2, 2019

two gaps cleared yesterday, triple top on daily

DAX Index - 1D - XETR O 12469.67 H 12497.28 L 12263.83 C 12263.83 -164.25 (-1.32%)

MA (50, close)

MA (200, close)

Market Closed Delayed

